

PRINCIPAL

Janet Lehr

Estab. 1972

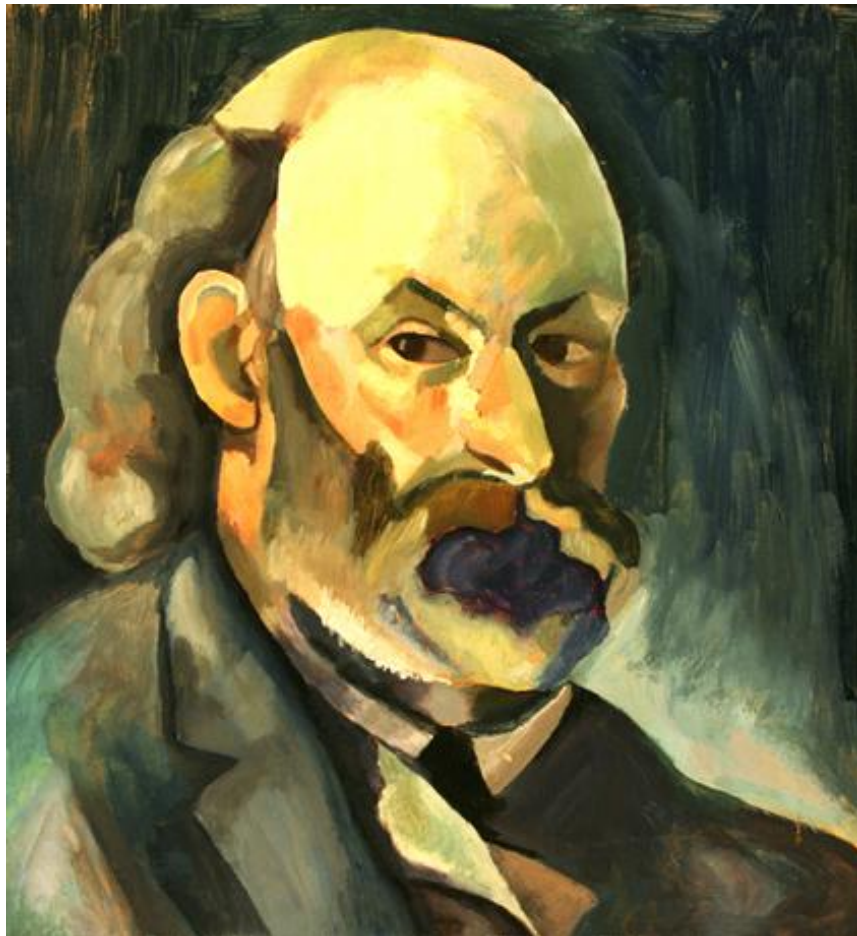


NEW YORK CITY

891 Park Avenue  
New York NY 10075  
TEL/FAX 212 288 6234  
c.516 353 6450  
[janetlehr@veredart.com](mailto:janetlehr@veredart.com)

19TH and 20TH CENTURY MASTERS  
and ART ADVISORY SERVICES

**MORGAN RUSSELL**  
AMERICAN 1886 – 1953



Double - sided Painting

recto: **PORTRAIT OF CEZANNE** c. 1912, Oil on board, 15 3/4 x 13 7/8 in.

verso: **STILL LIFE**, 15 3/4 x 13 7/8 in.

**PRINCIPAL**

Janet Lehr

Estab. 1972



**NEW YORK CITY**

891 Park Avenue  
New York NY 10075  
TEL/FAX 212 288 6234  
c.516 353 6450  
[janetlehr@veredart.com](mailto:janetlehr@veredart.com)

19TH and 20TH CENTURY MASTERS  
and ART ADVISORY SERVICES

**Provenance:** The artist and his Estate

Collection of Julie and Lawrence Salander, New York, New York

(Acquired directly from the above.)

Private Collector, New York, New York, 2006 -

(Acquired directly from the above.)

**Exhibited:** New York, New York, Salander - O'Reilly Galleries (#AO23759)

Traveling Exhibition – CEZANNE AND AMERICAN MODERNISM

- Montclair, New Jersey, Montclair Art Museum, September 12, 2009 – January 3, 2010
- Baltimore, Maryland, The Baltimore Art Museum, February 14 – May 23, 2010
- Phoenix, Colorado, Phoenix Art Museum, June 26 – September 26, 2010

**Literature:** CEZANNE AND AMERICAN MODERNISM, Montclair Art Museum, Montclair, New Jersey, 2009

montclair MAGAZINE, Montclair, New Jersey, 2009, Cindy Schweich Handler, EXHIBITING GREATNESS, P. 42. Illustrated.

INSIDE NEW JERSEY, September 2009, PEGGY McCCLONE, MONTCLAIR ART MUSEUM'S GROUNDBREAKING EXHIBITION IS 10 YEARS IN THE Making, Illustrated.

Gail Stavitsky, Katherine Rothkopf, CEZANNE AND AMERICAN MODERNISM, Montclair Art Museum, Montclair, New Jersey, The Baltimore Museum of Art, Baltimore, Maryland, Yale University Press, New Haven, Connecticut, 2009, P. 25, P. 344, No. 96, and P. 292, Cat 96, Illustrated.

THE WALL STREET JOURNAL, Judith H. Dobrzynski, HIS TRANSATLANTIC PROGENY, New York, October 15, 2009, P. 7.

**PRINCIPAL**

Janet Lehr

Estab. 1972



**NEW YORK CITY**

891 Park Avenue  
New York NY 10075  
TEL/FAX 212 288 6234  
c.516 353 6450  
[janetlehr@veredart.com](mailto:janetlehr@veredart.com)

19TH and 20TH CENTURY MASTERS  
and ART ADVISORY SERVICES

This painting is a “homage” to the Paul Cezanne SELF PORTRAIT, c. 1880, in the collection of the Pushkin Museum, Moscow, Russia. While their composition and structure are the same, the Russell is clearly no a copy, and demonstrates Cezanne’s influence on the development of Russell’s synchromist style.

Recent auction prices:



Morgan  
Russell (b.  
1886, d.  
1953)  
[Synchrony  
in blue-  
violet](#)  
1912  
Paintings  
13 x 9  
inches

May 26,  
1999

Christie's  
New York  
Important  
American  
Paintings,  
Drawings &  
Sculpture  
(Lot 128)

\$	\$
200,000	270,000
- \$	USD
300,000	Hammer
USD	

Morgan

November Christie's

\$ \$

PRINCIPAL

Janet Lehr

Estab. 1972



NEW YORK CITY

891 Park Avenue  
 New York NY 10075  
 TEL/FAX 212 288 6234  
 c.516 353 6450  
[janetlehr@veredart.com](mailto:janetlehr@veredart.com)

19TH and 20TH CENTURY MASTERS  
 and ART ADVISORY SERVICES



Russell (b. 29, 2001  
 1886, d.  
 1953)  
[Synchronist  
 nude](#)  
 1913  
 Paintings  
 24 x 20  
 inches

New York 100,000 204,000  
 Important - \$ USD  
 American 150,000 Hammer  
 Paintings, USD  
 Drawings &  
 Sculpture  
 (Lot 88)



Morgan  
 Russell (b.  
 1886, d.  
 1953)  
[Synchrony  
 No. 2 to  
 light](#)  
 1912  
 Paintings

Sotheby's  
 New York  
 The \$  
 Collection of 160,000  
 Lydia USD  
 Winston Hammer  
 Malbin (Lot  
 46)

PRINCIPAL

Janet Lehr

Estab. 1972



NEW YORK CITY

891 Park Avenue  
New York NY 10075  
TEL/FAX 212 288 6234  
c.516 353 6450  
[janetlehr@veredart.com](mailto:janetlehr@veredart.com)

19TH and 20TH CENTURY MASTERS  
and ART ADVISORY SERVICES



13 x 9  
inches

Morgan  
Russell (b.  
1886, d.  
1953)

[Synchronist  
still life](#)

Paintings  
17x13  
inches

November  
29, 2000

Christie's  
New York  
American  
Impressionist  
Paintings,  
Drawings &  
Sculpture  
(Lot 141)

\$  
70,000 \$90,000  
- \$ USD  
94,000 Hammer  
USD



Morgan  
Russell (b.  
1886, d.  
1953)

[Synchronie  
in Orange](#)

1922  
Paintings  
18 x 10.75  
inches

December  
10, 2007

Bonhams &  
Butterfields  
S.F. & L.A.  
California  
and American  
Paintings &  
Sculpture  
(Lot 210)

\$  
15,000 \$ 72,000  
- \$ USD  
20,000 Premium  
USD



Morgan  
Russell (b.  
1886, d.  
1953)

[Synchrony](#)

Circa 1913  
Paintings  
12.75 x 9.5  
inches

May 23,  
2013

Christie's  
New York  
American Art  
(Lot 6)

\$60,000 \$ 62,500  
- USD  
\$80,000 Premium  
USD